

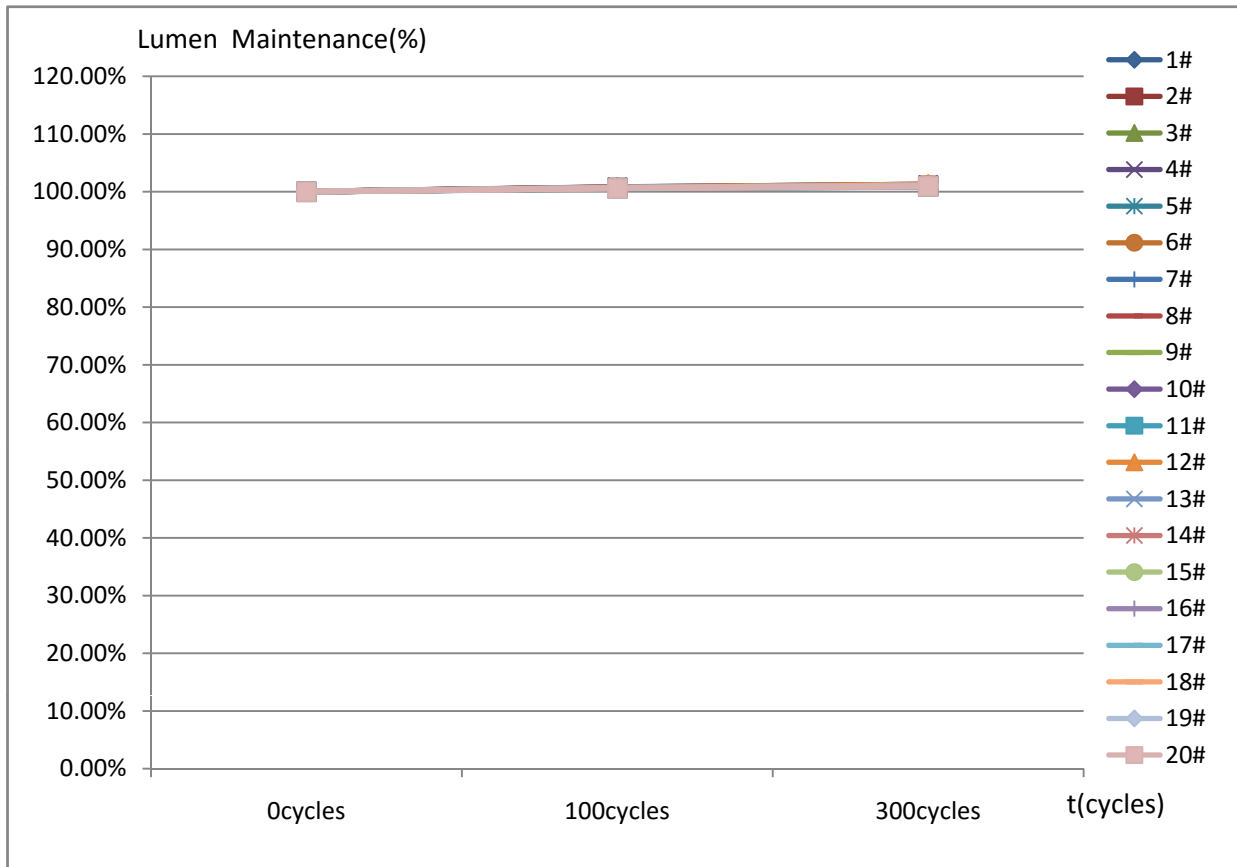
检测报告(简版)

报告编号: LAB2009147-01

第 1 页共 6 页

1. 客户名称:深圳瑞丰通用封装事业部照明事业部产品技术一部中小功率产品组/李小敏
2. 样品编号:1#~20#
3. 产品规格(型号)/批次:RF-P65MI32DS-AF-N-Y/SC17-200907007
4. 检测时间:2020.09.28~2020.10.06
5. 检测设备: LED阵列快速测试系统(G118471CA833115); (两箱式)高低温冲击试验箱(40023)
FLUKE万用表(34700492WS); 回流焊炉(N0842010); 电热鼓风干燥箱(TST1005028)
显微镜(MT 4X); DSX500光学电子显微镜(4B43960)
6. 环境条件:(22~28)℃, (30~70)%RH
7. 检测依据标准:环境试验 第二部分: 试验方法 试验N: 温度变化 GB/T 2423.22-2012
LED的测量 CIE127: 2007
8. 检测项目: 冷热冲击试验
9. 检测条件: 预处理: 125℃烘烤2H, 回流焊1次(参照SMT回流焊说明WI-R00-004文件)
-40℃(15min)~100℃(15min), 转换时间10s, 试验时间300Cycles, 测试电流60mA,
积分球2π测试, 测试点: 0Cycle, 100Cycles, 300Cycles

Φ (lm) 试验变化图



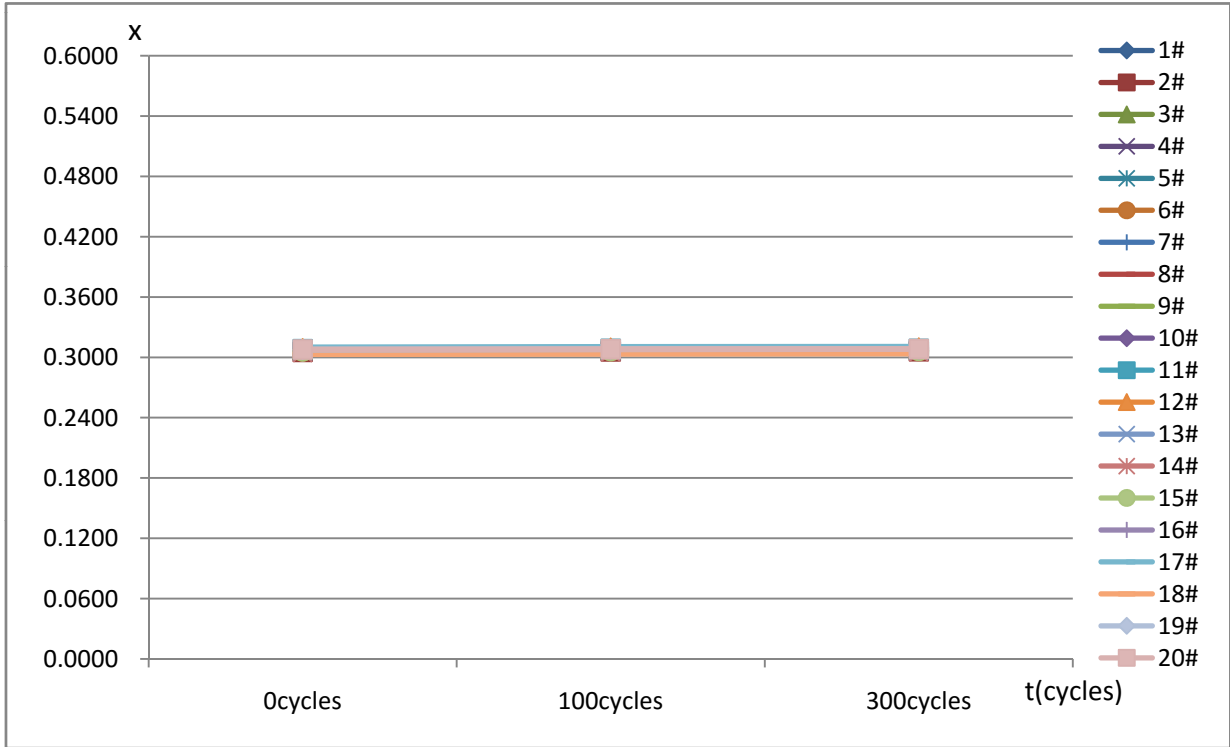
检测: 黄蔚琼 2020.10.09

审核: 张水城 2020.10.10

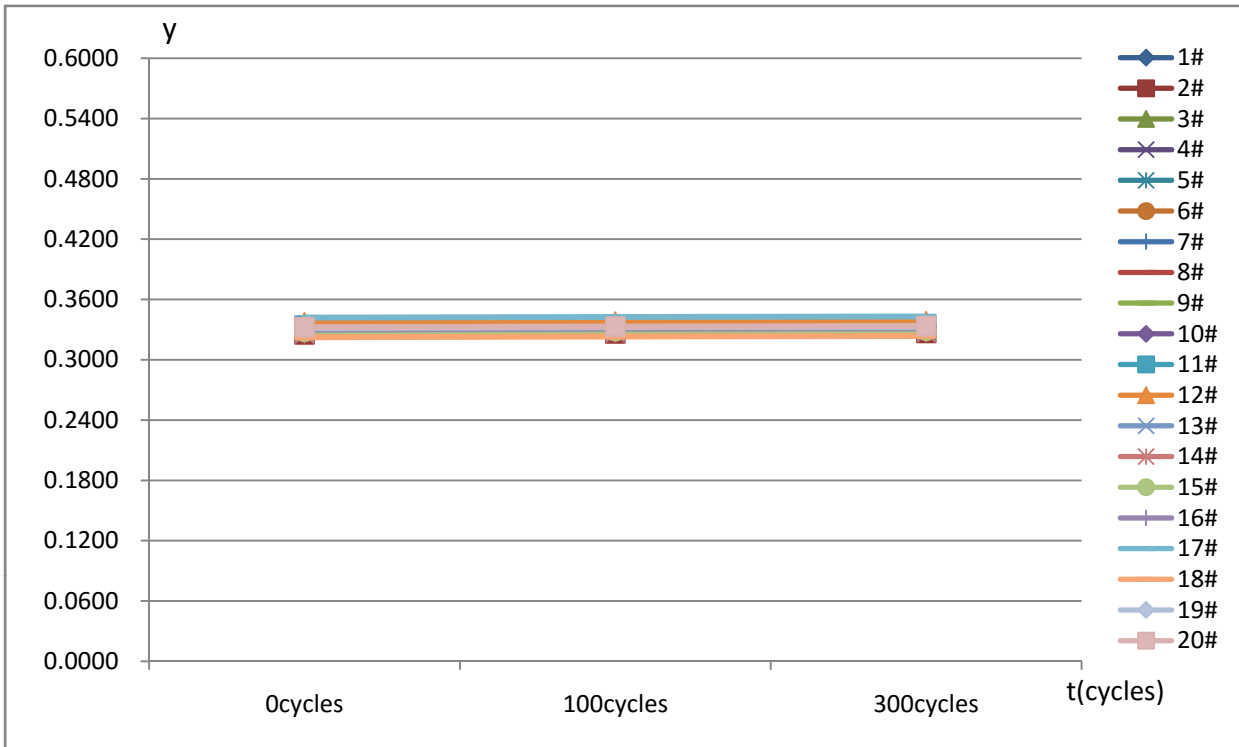
批准: 张列祥 2020.10.12

检测报告(简版)

x试验变化图



y试验变化图



检测报告(简版)

报告编号: LAB2009147-01

第 4 页共 6 页

序号	Φ (lm)			Lumen Maintenance (%)		
	0cycles	100cycles	300cycles	0cycles	100cycles	300cycles
1#	23.60	23.78	23.89	100.00%	100.76%	101.23%
2#	25.22	25.39	25.48	100.00%	100.67%	101.03%
3#	24.62	24.80	24.88	100.00%	100.73%	101.06%
4#	22.85	23.03	23.13	100.00%	100.79%	101.23%
5#	23.86	23.99	24.07	100.00%	100.54%	100.88%
6#	25.26	25.41	25.52	100.00%	100.59%	101.03%
7#	25.48	25.63	25.74	100.00%	100.59%	101.02%
8#	23.29	23.46	23.55	100.00%	100.73%	101.12%
9#	23.09	23.24	23.34	100.00%	100.65%	101.08%
10#	25.09	25.25	25.36	100.00%	100.64%	101.08%
11#	24.94	25.09	25.16	100.00%	100.60%	100.88%
12#	23.76	23.94	24.05	100.00%	100.76%	101.22%
13#	22.77	22.92	23.02	100.00%	100.66%	101.10%
14#	24.25	24.40	24.48	100.00%	100.62%	100.95%
15#	25.36	25.52	25.62	100.00%	100.63%	101.03%
16#	23.14	23.30	23.36	100.00%	100.69%	100.95%
17#	23.83	23.99	24.09	100.00%	100.67%	101.09%
18#	25.08	25.24	25.36	100.00%	100.64%	101.12%
19#	25.26	25.42	25.50	100.00%	100.63%	100.95%
20#	23.22	23.35	23.43	100.00%	100.56%	100.90%
Max	25.48	25.63	25.74	100.00%	100.79%	101.23%
Min	22.77	22.92	23.02	100.00%	100.54%	100.88%
Avg	24.20	24.36	24.45	100.00%	100.66%	101.05%

序号	VF (V)			ΔVF (V)	
	0cycles	100cycles	300cycles	100cycles	300cycles
1#	3.086	3.089	3.089	0.003	0.003
2#	3.108	3.113	3.113	0.005	0.005
3#	3.088	3.093	3.090	0.005	0.002
4#	3.100	3.104	3.102	0.004	0.002
5#	3.237	3.250	3.240	0.013	0.003
6#	3.111	3.124	3.114	0.013	0.003
7#	3.220	3.217	3.219	-0.003	-0.001
8#	3.118	3.115	3.116	-0.003	-0.002
9#	3.091	3.093	3.094	0.002	0.003
10#	3.095	3.098	3.099	0.003	0.004
11#	3.086	3.086	3.088	0.000	0.002
12#	3.094	3.098	3.099	0.004	0.005
13#	3.089	3.091	3.091	0.002	0.002
14#	3.138	3.132	3.135	-0.006	-0.003
15#	3.127	3.122	3.124	-0.005	-0.003
16#	3.099	3.100	3.101	0.001	0.002
17#	3.102	3.104	3.104	0.002	0.002
18#	3.210	3.223	3.214	0.013	0.004
19#	3.103	3.115	3.105	0.012	0.002
20#	3.080	3.082	3.083	0.002	0.003

检测报告(简版)

报告编号: LAB2009147-01

第 5 页共 6 页

序号	IF(mA)		
	0cycles	100cycles	300cycles
1#	59.88	59.90	59.96
2#	59.88	59.90	59.96
3#	59.88	59.90	59.96
4#	59.88	59.90	59.95
5#	59.88	59.90	59.95
6#	59.88	59.90	59.96
7#	59.88	59.90	59.96
8#	59.88	59.90	59.96
9#	59.88	59.90	59.96
10#	59.88	59.90	59.96
11#	59.88	59.90	59.96
12#	59.88	59.90	59.96
13#	59.88	59.90	59.96
14#	59.88	59.90	59.96
15#	59.88	59.90	59.95
16#	59.88	59.90	59.95
17#	59.88	59.90	59.95
18#	59.88	59.90	59.96
19#	59.88	59.90	59.96
20#	59.88	59.90	59.96

序号	x			Δx	
	0cycles	100cycles	300cycles	100cycles	300cycles
1#	0.3081	0.3085	0.3088	0.0004	0.0007
2#	0.3055	0.3060	0.3062	0.0005	0.0007
3#	0.3073	0.3076	0.3077	0.0003	0.0004
4#	0.3070	0.3073	0.3075	0.0003	0.0005
5#	0.3079	0.3081	0.3082	0.0002	0.0003
6#	0.3059	0.3063	0.3064	0.0004	0.0005
7#	0.3058	0.3062	0.3062	0.0004	0.0004
8#	0.3080	0.3086	0.3086	0.0006	0.0006
9#	0.3042	0.3048	0.3050	0.0006	0.0008
10#	0.3063	0.3067	0.3068	0.0004	0.0005
11#	0.3083	0.3085	0.3085	0.0002	0.0002
12#	0.3091	0.3095	0.3097	0.0004	0.0006
13#	0.3060	0.3063	0.3064	0.0003	0.0004
14#	0.3049	0.3053	0.3054	0.0004	0.0005
15#	0.3059	0.3063	0.3064	0.0004	0.0005
16#	0.3071	0.3075	0.3076	0.0004	0.0005
17#	0.3100	0.3104	0.3105	0.0004	0.0005
18#	0.3032	0.3036	0.3038	0.0004	0.0006
19#	0.3077	0.3082	0.3083	0.0005	0.0006
20#	0.3079	0.3082	0.3084	0.0003	0.0005

检测报告(简版)

报告编号: LAB2009147-01

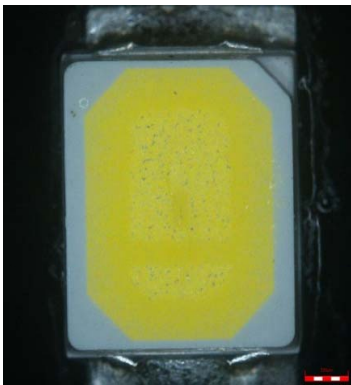
第 6 页共 6 页

序号	y			Δy	
	0cycles	100cycles	300cycles	100cycles	300cycles
1#	0.3308	0.3319	0.3324	0.0011	0.0016
2#	0.3252	0.3262	0.3266	0.0010	0.0014
3#	0.3310	0.3318	0.3320	0.0008	0.0010
4#	0.3265	0.3275	0.3278	0.0010	0.0013
5#	0.3326	0.3333	0.3335	0.0007	0.0009
6#	0.3279	0.3286	0.3289	0.0007	0.0010
7#	0.3276	0.3284	0.3286	0.0008	0.0010
8#	0.3316	0.3328	0.3330	0.0012	0.0014
9#	0.3275	0.3286	0.3291	0.0011	0.0016
10#	0.3313	0.3322	0.3326	0.0009	0.0013
11#	0.3340	0.3348	0.3347	0.0008	0.0007
12#	0.3371	0.3379	0.3384	0.0008	0.0013
13#	0.3271	0.3281	0.3282	0.0010	0.0011
14#	0.3258	0.3266	0.3269	0.0008	0.0011
15#	0.3278	0.3285	0.3289	0.0007	0.0011
16#	0.3300	0.3310	0.3313	0.0010	0.0013
17#	0.3419	0.3426	0.3430	0.0007	0.0011
18#	0.3223	0.3232	0.3237	0.0009	0.0014
19#	0.3315	0.3324	0.3325	0.0009	0.0010
20#	0.3325	0.3331	0.3336	0.0000	0.0011

单颗LED判定基准:

项目	min	max
Lumen Maintenance (%)	90%	110%
ΔVF	-0.5	0.5
Δx	-0.01	0.01
Δy	-0.015	0.015
外观无胶裂, 变黄, 发黑等现象		

经过300cycles冷热冲击试验, 全部样品各项参数均在标准范围内。
外观描述: 样品外观正常, 如下图所示



试验结果: 合格

备注: 检测结果只对本次样品负责;

.....结束.....