

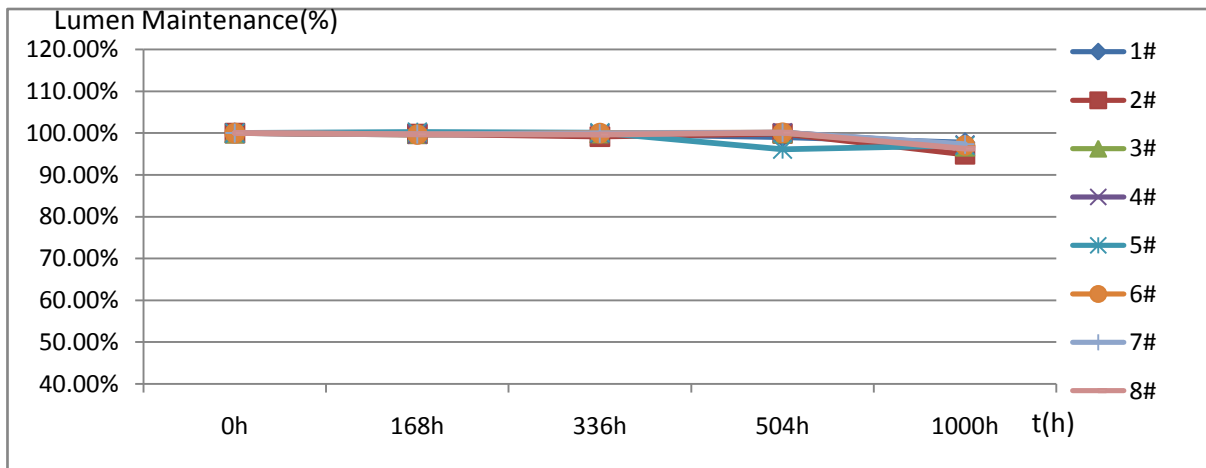
检测报告(内部)

报告编号: LAB1812317-02

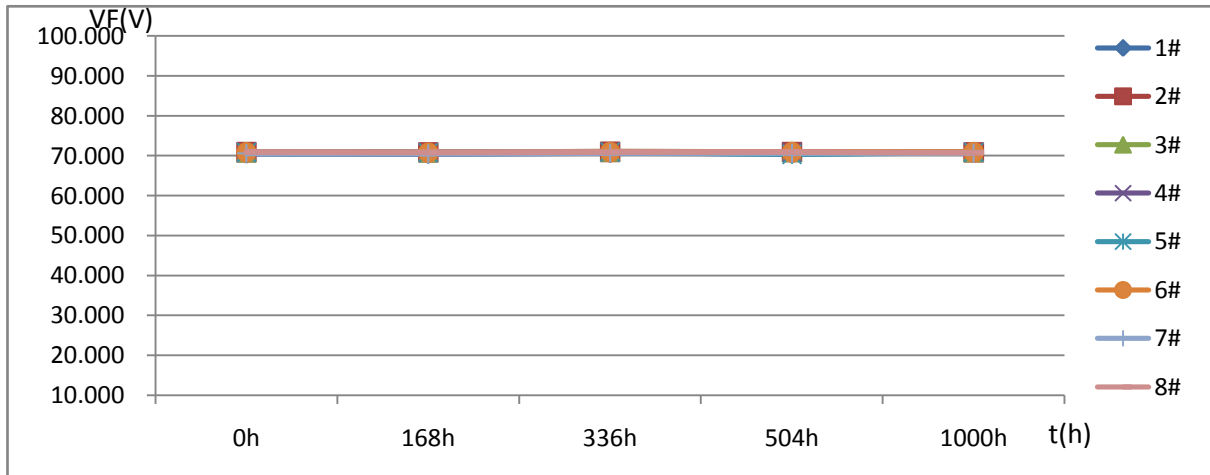
第 1 页共 5 页

1. 客户名称: NPI/杨涛
2. 样品编号: 1#~8#
3. 产品规格/型号: RF-FT5FW2K68-T5-B/SC17-181205802
4. 检测时间: 2018. 12. 29~2019. 02. 12
5. 检测设备: LED-专用精密光电烤箱 (SZ12111738); LED阵列快速测试系统 (G118471CA833115);
显微镜 (MT 4X); DC POWER SUPPLY (160303750); FLUKE万用表 (34700492WS);
6. 环境条件: (22~28) °C, (30~70) %RH
7. 检测依据标准: 电工电子产品环境试验 第2部分: 试验方法 试验B: 高温 GB/T 2423. 2-2008,
LED的测量 CIE127: 2007
8. 检测项目: 高温老化试验
9. 检测条件: 85°C, 老化时间1000H, 老化电流20mA, 测试电流20mA,
积分球2 π 测试, 测试点: 0h, 168h, 336h, 504h, 1000h

Φ (1m) 试验变化图



VF (V) 试验变化图



检测: 张东杰 2019. 02. 12

审核: 杨礼星 2019. 03. 11

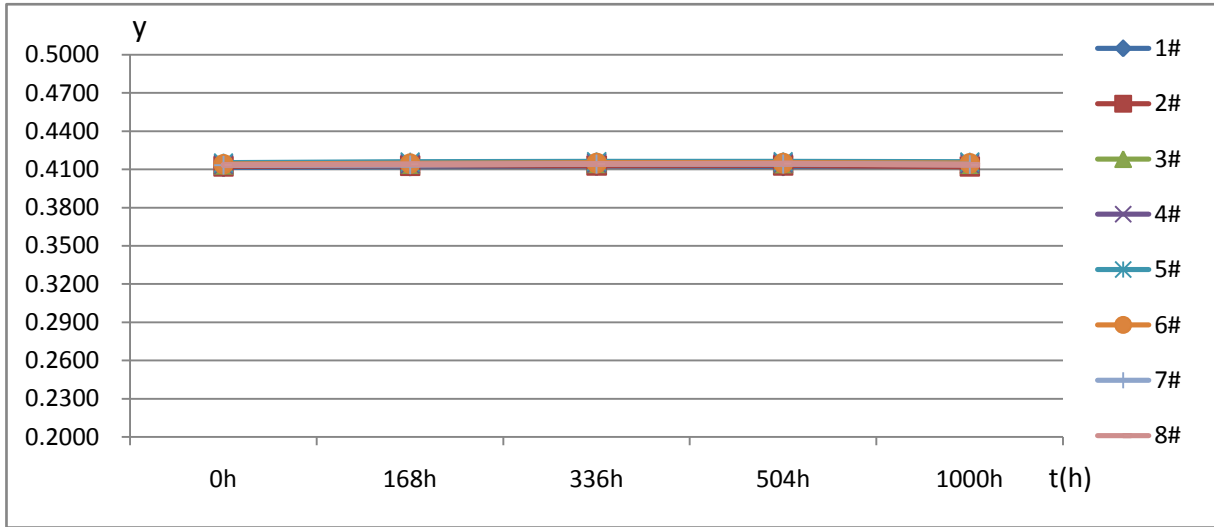
批准: 俞敏 2019. 03. 12

检测报告(内部)

报告编号: LAB1812317-02

第 3 页共 5 页

y试验变化图



序号	Φ (1m)					Lumen Maintenance (%)				
	0h	168h	336h	504h	1000h	0h	168h	336h	504h	1000h
1#	145.0	144.5	144.7	143.6	141.7	100.00%	99.66%	99.79%	99.03%	97.72%
2#	152.6	152.3	151.3	152.4	144.8	100.00%	99.80%	99.15%	99.87%	94.89%
3#	153.4	153.2	153.4	153.4	148.5	100.00%	99.87%	100.00%	100.00%	96.81%
4#	153.2	152.8	153.0	153.4	148.9	100.00%	99.74%	99.87%	100.13%	97.19%
5#	151.7	152.1	151.9	145.8	147.2	100.00%	100.26%	100.13%	96.11%	97.03%
6#	153.4	152.9	153.4	153.5	148.9	100.00%	99.67%	100.00%	100.07%	97.07%
7#	152.6	152.2	152.5	152.8	148.5	100.00%	99.74%	99.93%	100.13%	97.31%
8#	149.6	149.2	149.1	149.8	144.0	100.00%	99.73%	99.67%	100.13%	96.26%
Max	153.4	153.2	153.4	153.5	148.9	100.00%	100.26%	100.13%	100.13%	97.72%
Min	145.0	144.5	144.7	143.6	141.7	100.00%	99.66%	99.15%	96.11%	94.89%
Avg	151.4	151.2	151.2	150.6	146.6	100.00%	99.81%	99.82%	99.43%	96.79%

序号	VF (V)					ΔVF (%)			
	0h	168h	336h	504h	1000h	168h	336h	504h	1000h
1#	70.523	70.479	70.697	70.523	70.806	-0.06%	0.25%	0.00%	0.40%
2#	70.904	70.871	70.969	70.947	70.882	-0.05%	0.09%	0.06%	-0.03%
3#	70.893	70.882	70.991	70.947	70.926	-0.02%	0.14%	0.08%	0.05%
4#	70.806	70.784	70.915	70.882	70.849	-0.03%	0.15%	0.11%	0.06%
5#	70.817	70.784	70.926	70.327	70.871	-0.05%	0.15%	-0.69%	0.08%
6#	70.860	70.795	70.958	70.904	70.904	-0.09%	0.14%	0.06%	0.06%
7#	70.621	70.555	70.719	70.653	70.664	-0.09%	0.14%	0.05%	0.06%
8#	70.904	70.860	70.893	70.947	70.773	-0.06%	-0.02%	0.06%	-0.18%

检测报告(内部)

报告编号:LAB1812317-02

第 4 页共 5 页

序号	IF (mA)				
	0h	168h	336h	504h	1000h
1#	19.77	19.77	19.79	19.76	19.90
2#	19.78	19.77	19.81	19.77	19.89
3#	19.80	19.78	19.80	19.77	19.89
4#	19.80	19.78	19.80	19.78	19.89
5#	19.80	19.79	19.79	19.78	19.89
6#	19.80	19.79	19.79	19.78	19.89
7#	19.80	19.80	19.80	19.78	19.89
8#	19.80	19.79	19.79	19.78	19.89

序号	x					Δx			
	0h	168h	336h	504h	1000h	168h	336h	504h	1000h
1#	0.4603	0.4603	0.4607	0.4602	0.4600	0.0000	0.0004	-0.0001	-0.0003
2#	0.4625	0.4623	0.4623	0.4623	0.4602	-0.0002	-0.0002	-0.0002	-0.0023
3#	0.4640	0.4641	0.4641	0.4641	0.4630	0.0001	0.0001	0.0001	-0.0010
4#	0.4646	0.4645	0.4648	0.4646	0.4637	-0.0001	0.0002	0.0000	-0.0009
5#	0.4640	0.4638	0.4642	0.4640	0.4629	-0.0002	0.0002	0.0000	-0.0011
6#	0.4646	0.4644	0.4647	0.4646	0.4636	-0.0002	0.0001	0.0000	-0.0010
7#	0.4643	0.4639	0.4644	0.4642	0.4632	-0.0004	0.0001	-0.0001	-0.0011
8#	0.4624	0.4622	0.4624	0.4625	0.4610	-0.0002	0.0000	0.0001	-0.0014

检测报告(内部)

报告编号: LAB1812317-02

第 5 页共 5 页

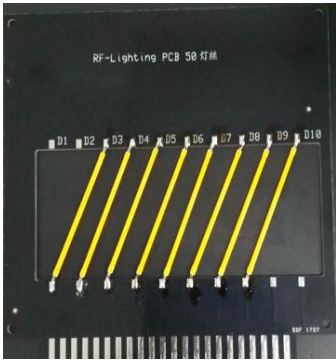
序号	y					Δy			
	0h	168h	336h	504h	1000h	168h	336h	504h	1000h
1#	0.4118	0.4123	0.4127	0.4125	0.4127	0.0005	0.0009	0.0007	0.0009
2#	0.4125	0.4130	0.4131	0.4132	0.4123	0.0005	0.0006	0.0007	-0.0002
3#	0.4140	0.4146	0.4151	0.4150	0.4145	0.0006	0.0011	0.0010	0.0005
4#	0.4140	0.4145	0.4149	0.4150	0.4145	0.0005	0.0009	0.0010	0.0005
5#	0.4151	0.4158	0.4161	0.4161	0.4158	0.0007	0.0010	0.0010	0.0007
6#	0.4141	0.4146	0.4150	0.4150	0.4147	0.0005	0.0009	0.0009	0.0006
7#	0.4134	0.4136	0.4142	0.4142	0.4138	0.0002	0.0008	0.0008	0.0004
8#	0.4136	0.4140	0.4142	0.4145	0.4136	0.0004	0.0006	0.0009	0.0000

单颗LED判定基准:

项目	min	max
Lumen Maintenance (%)	90%	110%
ΔVF	-6%	6%
Δx	-0.01	0.01
Δy	-0.015	0.015

外观无胶裂, 变黄, 发黑等现象

经过1000h高温老化试验, 全部样品各项参数均在标准范围内。
外观描述: 全部样品外观正常



试验结果: 合格

备注: 检测结果只对本次样品负责。

.....结束.....